



ehanced  
LEVEL OF WELLNESS



HEALTHCARE FURNITURE  
**GLOBAL care**  
Quality of Life Products

 **cubicles.com**  
888-442-8242



**cubicles.com**  
888-442-8242

## modular linked

MEDICAL HOSPITAL WAITING ROOM CHAIRS

*A modular hospital chairs system designed with people in mind.*

Interlock performs 24/7, offering loved ones a place to rest in the fundamental comfort they deserve. Interlock's versatile, fresh combination of style, comfort and durability is unmatched in strength and modularity. Designed specifically for demanding, ever changing hospital waiting room spaces Interlock can be configured to fit the needs within a space and modified or reconfigured should the space change.

One of the most valuable features is Interlock's frame which can be specified in wood for a home-like warm feeling or aluminum with several stylish finish combinations to enrich any space. Both frames offer metal to metal connections for superior performance and the option of wood or self skinned urethane arm rests for properly meeting the demands of medical waiting room space.

### *Stand Alone Bench Options*



**GC4133** Three seat bench.



**GC4134CT** Two seat bench with center table top.

Additional bench configurations are available. Please refer to the price list for details.

Above, top: GC4105TOP, GC4125, GC4115 shown in Mobern, Luxe Fleck (LU-601), arms and leg inserts in Avant Maple (AVM), frame in Tungsten (TUN), GC4105 shown in Mobern, Luxe Lily Pad (LU-604), arms and leg inserts in Avant Maple (AVM), frame in Tungsten (TUN). Tables in Tiger Maple (TMP). Cover: GC4118, GC4115HB back shown in Maharam, Corner Regiment (464060-001), seat in Momentum, Foray Cinder (09103950), arm caps in Toast (TOA), frame in Tungsten (TUN). Tables in Constellation Java (CSJ). Above, bottom: GC4133, GC4134CT shown in Mobern, Luxe Lily Pad (LU-604), leg inserts in Avant Maple (AVM), frame in Tungsten (TUN).





**cubicles.com**  
888-442-8242

## free standing medical chairs

FOR LOUNGE AND COMMON AREAS

*Create a warm, elegant feeling with interlock wood.*

The product grouping includes high and low back standard and bariatric chairs and bench models. The standard models are warranted for a 500 lb active weight capacity and the Bariatric chair models are warranted for a 750 lb active weight capacity. Rounding out the product offering are complementary tables and table tops in attractive shapes and sizes. Tables are available as freestanding

units and table tops are available for linking seating units. Specially designed as a geriatric chair with minimum rearward seat pitch makes entry and exit from the chair more comfortable while reducing stress on the lower back. The seat cushion is constructed from high density UltraCell foam. Seat and back cushions are fully wrapped in textile with a nylon zippered closure to allow for easy cleaning or replacement. Perfect healthcare furniture.

### *Freestanding Table Options*



**GC4108C-LP** Round Coffee Table.



**GC4109RMR-LP** Rectangular Coffee Table.



**GC4108SMR-LP** Square Coffee Table with magazine shelf.

Above, top: GC4115FHB, GC4105F shown in CF Stinson, Straight and Narrow Charcoal (61637), arms and frame in Walnut (TWM), Tables shown in Tiger Walnut (TWL).

Above, bottom: GC4108C-LP, GC4108MR-LP laminate tops shown in Tiger Walnut (TWL), leg inserts in Champagne (CP), frame in Tungsten (TUN).

*Interlock offers complete freedom of design and specifications for all of your hospital chairs.*

*Wood Frame Options* (Available in a full range of GLOBALcare wood finishes)



Open wood frame.



Fluted wood frame.



Linear wood frame.

 **cubicles.com**  
888-442-8242

*Aluminum Frame Options*



Tunsten (TUN).



Toast (TOA).



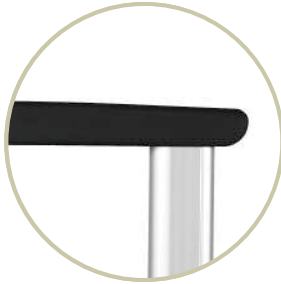
Platinum (PLT).



## Arm Cap Options



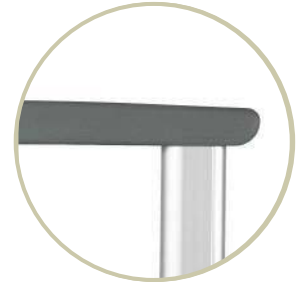
Wood armcaps. Available in a full range of GLOBAL care wood finishes. For use with wood and aluminum frames.



Black (BLK) self-skinned urethane armcaps. For use with wood and aluminum frames.

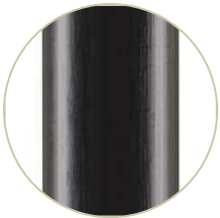


Toast (TOA) self-skinned urethane armcaps. For use with wood and aluminum frames.



Platinum (PLT) self-skinned urethane armcaps. For use with wood and aluminum frames.

## Leg Insert Options



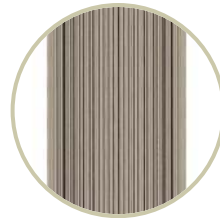
Plastic smooth. Shown in Black (BLK)



Plastic ribbed. Shown in Black (BLK)



Epoxy painted aluminum finish smooth. Shown un Toast (TOA).



Anodized aluminum finish ribbed. Shown in Champagne (CP).



Wood. Shown in Avant Maple (AVM).

Plastic.

Anodized aluminum finish.

Epoxy painted aluminum finish.

Wood available in a full range of GLOBALcare wood finishes.



## Hospital Waiting Room Furniture Features and Benefits



Low back, High back and Bariatric chairs options.

Removable seat and back covers are standard for easy cleaning.

Contoured back and lumbar support for extra comfort.

Wood or self-skinned urethane arm caps.

Adequate spacing between seat back and sides for easy clean out.

High density UltraCell bio foam seat, waterfall curve front with seamless upholstery.

Wood or aluminum frame with metal to metal connections for strenght and durability.

Wall-saver glide (optional) provides a durable solution for preventing nicks and scratches to your walls.

**GC4101** High back chair with arms. Shown in Allante, Light Sand (A25E).

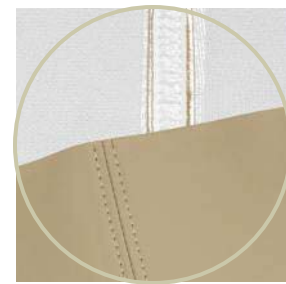


**GC4125** Bariatric chair with arms.

Bariatric chair models can be stand alone or linked to other models and are warranted to 750 lb active weight capacity.



Seat cushions and covers are removable, replaceable and are supported by 2" steel frame with perma-mesh suspension for superior performance.



Seams can be sealed to prevent penetration of fluids or insects through the stitch holes and upholstery seams.

**Your Healthcare Facility Will Never Be The Same!**